

Your fishing license



Fishing license

In order to fish in the Pas-de-Calais departement, you will need a valid fishing license (carte de pêche). When fishing, you must have with you at all times: Both a fishing license issued by an AAPPMA of the Pas-de-Calais departement or one delivered by one of the neighbouring departements together with a subscription to a reciprocity agreement (URNE) and the official freshwater eel fishing form (carnet de pêche de l'anguille - CERFA form N°14358*01).



It is illegal to fish without a fishing license. Any fishery officer is allowed to fine you if you cannot show him/her your fishing license.

Purchasing a fishing license

There are four different ways for you to obtain a fishing license:
■ Online: www.cartedepeche.fr
■ At a local agents' (find one near you on www.peche62.fr)
■ At the local AAPPMA (affiliated fishing association)
■ At the federation



Your license fees are put to good use

- **Obtaining fishing rights**
The fees collected by the Federation and the AAPPMA pay for the necessary fishing rights for anglers.
 - **Promoting and developing fishing**
These fees also allow the federation to organise fishing events and activities, from fishing classes for children (federation activities and fishing workshops) and the maintenance of fishing grounds to promoting fishing (signs, fishing guide) and the stocking of some fishing grounds.
 - **Protecting our fish and freshwater capital**
When you purchase a fishing license, you fund AAPPMA and Fishing federation actions in the public interest, such as fishing ground maintenance, ecological restoration and protection of fish species.
 - License fees also helps maintain a fishing network in charge of communicating, teaching and monitoring as well as raising environmental awareness.
- Part of the fees is used to finance official water agencies for the protection of the aquatic environment.

Types of fishing licenses

There are 7 different fishing licenses to suit your every needs:

- Carte Interfédérale** If you want to fish in the URNE, CHI, EGH0 grounds, you will need the carte interfédérale, a reciprocal fishing license.
- Carte majeure** an annual card for people over 18.
- Découverte femme** an annual card especially for women (with only one fishing rod).
- Carte mineure** an annual card for 12 to 18 year-olds.
- Carte découverte** an annual card for children under 12 (with only one fishing rod).
- Carte journalière** our one-day fishing pass.
- Carte hebdomadaire** our weekly fishing pass.
- Timbre Grands Migrateurs** If you want to go sea trout or Atlantic salmon fishing, you will need a specific fishing stamp called Grands Migrateurs (large migratory fish).

All prices can be found on our website:
www.peche62.fr or on the dedicated license site www.cartedepeche.fr

Regulations

Carp fishing at night

Carp fishing is allowed at night on specific areas defined by prefectural decree - find them on our website, www.peche62.fr. Only vegetable fishing paste can be used as bait. Under no circumstances can a carp be kept alive or transported at night. In order to fight against illegal trade in carp, the transport of alive carp over 60 cm (1 ft. 11 ¾ in.) is banned and punished with a €22.500 fine. Access the interactive map of sites authorized for night carp fishing on www.peche62.fr section species specific regulations.
New Night carp fishing is authorized on the federal ponds of Plouvain, Aire-sur-la-Lys and Eerleques every 1st week-end of the month or according a prefectural calendar. Please check it on our website. The reservation is compulsory phoning on +33 391 92 02 03.

Reciprocal fishing agreement Carte Interfédérale

The most economical formula
Many fishing associations and federations "pool" their fishing grounds through a reciprocal agreement to make it easier for anglers to obtain a license and to create a much larger fishing area. The interfederal fishing license "carte interfédérale", will give you access to all AAPPMA angling grounds participating in the URNE, EGH0 and CHI reciprocal networks. The "Discovery under 12" fishing license (carte découverte), the "minor person" fishing license (Carte mineure) and the discovery fishing license for women (Carte Découverte Femme) benefit free of the reciprocal fishing agreement when the fishing license is taken in a reciprocal fishing association. Please check up with the association where you will fish in order to verify the validity of your license. Important: the adherents of reciprocal associations are obliged to respect the rules of the other reciprocal associations where they will fish. To sustain the balance of reciprocity, we thank you not to go to the fish restocking of the other reciprocal association.



Selling your catch

You are not allowed to sell your catch.

Minimal catch size

Catch size is measured from the tip of the jaw to the extremity of the tail. Fish shorter than the minimal size must be released immediately (see the table concerning fishing hours and minimal catch size).

Where learning to fish in the Pas-de-Calais département ?

Fishing for beginner and intermediate anglers Free

For several years now, the FDAAPPMA 62 has been offering free workshops to all anglers throughout the département. Participants will be guided by a professional instructor, and all the necessary fishing tackle will be provided free of charge by the fishing federation. In order to participate to this workshop, you only need apply. Call +33 3 91 92 02 03 or send an e-mail to contact@peche62.fr

AAPPMA	Date	Level	Min. age	Technic
Federal course in Bruy	April 17, 2024 from 9:30 a.m. to 4:30 p.m.	All levels	From 12y. old	Trout fishing with lure or natural baits
Wimereux	May 04, 2024 from 9:00. to noon	-	From 12y. old	Trout fishing with natural baits
Federal ponds of Ballastières	May 18, 2024 from 9:00 a.m. to 1:00 p.m.	Improvement	From 12y. old	Lure fishing
Carpistes Audomarois	June 1st, 2024 from 9:00 a.m. to 5:00 p.m.	All levels	From 12y. old	Carp fishing
Ternoise	June 05, 2024 from 9:30 a.m 9h30 to 4:00 p.m.	All levels	From 12y. old	Flyfishing
Federal course of Lys river	June 12, 2024 from 1:30 p.m. to 4:30 p.m.	Beginners	From 12y. old	Flyfishing and lure fishing
Houdain	June 15, 2024 from 1:30 p.m. to 4:30 p.m.	All levels	From 12y. old	Trout fishing with lure or natural baits
Auxi-le-Chateau	June 22, 2024 from 9:00 a.m. to 1:00 p.m.	All levels	From 12y. old	Lure fishing
Saint-Venant	July 06, 2024 from 9:00 a.m. to 1:00 p.m.	-	From 12y. old	Street fishing
Federal pond of Eperlecques	July 10, 2024 from 2:00 p.m. to 5:00 p.m.	-	From 12y. old	Lure fishing / feeder
Houille	September 07, 2024 from 9:30 a.m. to 4:00 p.m.	Lure fishing knowledges required	From 12y. old	Float tubing
Carpistes Audomarois	September 14, 2024 from 9:00 a.m. to 4:00 p.m.	All levels	From 12y. old	Carp fishing
Arques	September 28, 2024 from 9:00 a.m. to 1:00 p.m.	-	From 12y. old	Lure fishing

Other dates are coming soon on www.peche62.fr

Fly tying workshop

Create your own flies! The Federation provided the material. Free workshop. Meeting every Friday of February from 6:30 p.m. to 9:00 p.m. Registration required on +33 3 91 92 02 03.



The federal courses

Catch and release fishing grounds

"Catch and release" is compulsory on all federal courses even the federal ponds. Fishing with live or dead baits is forbidden.

Two catch and release fly fishing grounds

The fishing federation created two grounds for catch and release fly-fishing : the first one is the Crequoise river in Offin, Loison-sur-Créquoise and Beaurainville and the other one is the Course river in Beussent. The ground in Beussent has a fishing limit of 3 anglers a day by reservation one week before by phoning on +33 3 91 92 02 03.

New Six federal fishing courses for all techniques

The Pas-de-Calais Fishing Federation offers six federal catch and release courses for all fishing techniques (single hook). Go to the courses of Delettes, Esquerdes, Wizernes, Maresquel, Frévent and Bruy-la-Buissière. More information on www.peche62.fr

Float tubing

Thanks to the collaboration of the two Federations of North and Pas-de-Calais for the Fishing and the Protection of the Aquatic Environment to legalize float tubing on several waterways of the "Voies Navigables de France". Several courses are now opened to this practice: channelled Lys, beginning PK 0.50, end Pk of the North Department, Houille River, complete section, channel of Aire, crossing of the Bassée, upstream Impasse of Aire-sur-la-Lys, Channel of Beuvry, complete section and the Port of Pleasure in Bethune, complete section. The federal pond Contes is also open to this practice on reservation. For more information about float tubing regulation in Pas-de-Calais, go on www.peche62.fr



Fishing for persons with reduced mobility

You can find hereunder a list of some of the grounds where persons with reduced mobility can fish.

AAPPMA	Number	Location
Arques	9	2 in the Northern part of the Etang de Beausejour, behind the campsite 7 at the etang de Malhove pond that can be accessed through the rue de Savoie street Parking spot with a walking path leading to the pontoons
Beaurainville	1	Beaurain-Chateau marsh, 200 m/ 220 yd. from the kayaking base
Béthune	1	Water station 2 in Brimeux, walk along the Canche river, direct access from the main road for persons with reduced mobility
Brimeux	3	1 in communal ponds of Brimeux
Calais	3	Guines canal in Preville
Douriez	1	Haut-Pont marsh and Fontaines marsh
Écourt	1	Haut Pont marsh, campsite road, car access
Fédération de Pêche Contes	2	"Marais de Contes marsh", Pond N°2
Fédération de Pêche Montreuil	1	Canche, large migratory fishes ground, Moulin du Bacon street - 150 meters downstream of the treatment plant's car park
Fédération de Pêche Aire sur la Lys	1	Federal pond "Ballastières" in Aire sur la Lys
Frévent	1	Residence of Bords de Canche, 26th street of Général de Gaulle
Hesdin	2	Guisy - Rivière street - near the picnic area Bouin-Plumoisson : near campsite, downstream of the bridge
Lillers	1	Brûle Pond - Brule street
Mazingarbe	1	Canal of Aire in La Bassée, 39 street Jean Delattre
Montreuil-sur-Mer	2	Under the road bridge, at the place called Place du Cormoran Alley of the Franc Marais - Place called "The Beach"
Oignies	1	At 10 meters from the fishing local, "Bras mort" site
Oisy le Verger	1	Marais du Haut Pont marsh, "lot n°2", to the left by entering
Pailleur	2	Marsh path, across the etang du Grand Clair pond
Raye-sur-Authie	1	250 m / 275 yd. from the bridge
Renty	1	100 m / 110 yd. downstream from the bridge, easy to park and to access, the river is right by the town road and wheelchair accessible
Rollancourt	1	On the pond of category 2 rounds
Saint-Laurent-Blangy	1	Étang du Chevalier (Pond) - Through the entrance located Jean Jacques Rousseau street
Saint-Omer	1	Chrest Place
Saint Poi sur Ternoise	1	Anvin, Mazinghem street
Saint-Venant	4	On the passable part of the Digue de la Lys dam (150 m/ 165yd.Upstream from the Saint Venant lock) Boulevard vert, rue d'Aire street on the Courant du Malmeule river At the Pont d'Aire bridge, rue d'Aire street, on the Guarbecque river Rue Jean Moulin street, on the Busnes river

Fishing grounds

ð	City	AAPPMA	Pond
A	Aire sur la Lys	Fishing Federation	Ballastières
B	Arques	L'Union Arquoise	Batavia
C	Arques	L'Union Arquoise	Beausejour
D	Arques	L'Union Arquoise	Malhove
E	Aubin Saint Vaast	Les Pêcheurs Hesdinois	Comunal pond of Planty
F	Béthune	Les Percots Béthunois	Water station
G	Billy Montigny	Les Percoteux Billysiens	Marsh of pelves
H	Brimeux	Le Saumon de Brimeux	Communal ponds
I	Calais	Les Pêcheurs du Calaisis	Le Virval
J	Calais	Les Pêcheurs du Calaisis	Lake of Andres
K	Clairmarais	Fishing Federation	Harchelles
L	Contes	Fishing Federation	Federal pond
M	Courcelles-les-Lens	La Carpe Courcelloise	Water station
N	Eperlecques	Fishing Federation	Federal Pond
O	Écourt-Saint-Quentin	Les Pêcheurs Réunis	Communal marsh
P	Écourt-Saint-Quentin	Les Pêcheurs Réunis	Bequerel
Q	Esquerdes	Fishing Federation	La Poudrière
R	Lillers	Les Poissons Rouges	Eugène Lemoine Pond
S	Mont-Bernanchon	Fishing Federation	Federal Pond
T	Nesles	APLV	Les Glaisières
U	Noyelles sous Lens	Les Pêcheurs Noyellois	Étang du 14 juillet Pond
V	Noyelles sous Lens	Les Pêcheurs Noyellois	Boclets Pond
W	Oisy-Le-Verger	La Roche Dorée	Communal Ponds (N°1 and 2)
X	Pailleur	L'Amicale des Pêcheurs de Pailleur	Grand Clair
Y	Plouvain	Fishing Federation	Federal pond
Z	Rœux	Les Percots de la Scarpe	Communal Marshes
AA	Rollancourt	Les Amis de la Truite	Communal pond
BB	Saint-Laurent Blangy	Entente Halieutique du Val de Scarpe	Chevalier and Immercourt ponds
CC	Saint-Omer	La Concorde	Romelaître
DD	Saint-Venant	Le Brochet Saint-Venaisais	Communal Pond

Invasive alien species

Invasive alien species

Catfish, sunfish, pseudorasbora and American crayfish are invasive alien species and should never be released. They must be transported dead and their introduction prohibited. It is therefore strictly forbidden to use them for fishing as live or dead bait.

The round goby

This species, native to Eastern Europe, is known in France since the beginning of the 2010s. The round goby has a strong dynamic and shows an invasive character. With a mainly carnivorous diet (invertebrates, fry, eggs,...), this species is characterized by a black spot on the first dorsal fin. It is not to be confused with the sculpin, native species of our department.

By annual prefectural decree: it is forbidden to release the round goby, to use them dead or alive as bait.



Fishing schools and clubs

The fishing schools were created to help beginners develop the skills they need to be able to fish on their own and responsibly, respecting nature and those who enjoy it. In Pas-de-Calais, you can be taught fishing in :

Town	Name	Contact	Address
BRIMEUX	Le Saumon	M. BOUCHART	+33 6 11 49 45 36
DESVRES	APN	M. PINTÉ (Président)	06 21 29 41 72
MARQUISE	The Marquise Fishing School in partnership with the Wimille Flying Fishing Club	M. POHIER (Manager)	+33 6 21 39 21 43 clubdepechemouchewimille@gmail.com
SAINT-OMER	La Concorde	Mr. ROLLET (Manager)	+33 3 21 39 78 69
SAINT-VENANT	Le Brochet Saint-Venaisais	Mr. HONNART (Président)	+33 3 21 02 31 22

For more information about fishing clubs in Pas-de-Calais, please consult our website : www.peche62.fr or scan the qr-code.



Focus on the Federation's partner club in the organization of competitions and fishing activities.

Town	Name	Contact	Address
ARQUES	L'Union Arquoise Section Concours	Mr. CHARLEMAGNE (Président)	www.union-arquoise.fr/concours/
GUISY	Les Moucheurs des 7 Vallées	Mr. EL GUIDJ (Président)	Facebook : Les Moucheurs des 7 Vallées
SAINT-MARTIN BOULOGNE	Club Mouche 62	Mr. BAILLY (Président)	www.clubmouche62.fr ass@clubmouche62.fr
SAINT-OMER	Les Carpistes Audomarois	Mr. WERNERT (Président)	http://carpistesaudomarois.e-monsite.com
SAINT-POL-SUR-TERNOISE	Passion Pêche Mouche	M. GROUX (Président)	-

Events

World Fish Migration Day

As part of World Fish Migration Day, the Federation will organize a free meeting about migratory fish on Saturday June 8. This day will be led by the technical team of the Federation but also with renowned fishermen like Gaël Even. More information coming on : www.peche62.fr

Enduro Carpes Contes

For the 7th consecutive year, the Pas-de-Calais Fishing Federation in partnership with the association Les Carpistes Audomarois will renew the contest Enduro Carpe Contes on August 23, 24 and 25, 2024. Registrations and more information on: www.peche62.fr

Fishing Fair Join us!

Sunday June 2, 2024: anglers will gladly teach you and your family how to fish! Thanks to the Pas-de-Calais Fishing Federation and local fishing aquatic environment conservation associations, everybody can learn how to fish in their local river. The Federation will organize a fishing and nature village in Maresquel on Saturday June 1, 2024. To know all the places entertainment, please consult our website: www.peche62.fr



Remember, fishing is exceptionally free every first Sunday in June only as part of a fishing animation proposed by an AAPPMA (Association Approved for Fishing and Protection of the Aquatic Environment) and relayed by the Federation.

Useful information

Insurance

Anglers with a Pas-de-Calais fishing license benefit from the FDAAPPMA62 insurance coverage for civil liability, disability and death while fishing or working as volunteers for their local AAPPMA or for the fishing federation.

If you come across any contamination, call

OFB (river police) +33 3 21 23 42 75
The closest police station • Your local AAPPMA
The fishing federation: +33 3 91 92 02 03

Please react as fast as you can. If a machine answers your call, please leave a message and call the next number on the list until you reach someone who can come and assess the contamination.



Focus on...

New sites for compulsory catch and release

After the rivers of Aa, Hem, Ternoise, Wimereux, Bras de Brosne, Laquette, the Lave river will be under a prefectural «catch and release compulsory» decree for the 2024 year. Brown trout must be released. The various pressures exerted on the environment in recent years, in particular the repeated pollution and successive droughts justify this temporary regulation.



Fishing GUIDÉBOOK

62

Pas-de-Calais Federation for Fishing and Protection of the Aquatic Environment

GENERATION PÊCHE

FÉDÉRATION DÉPARTEMENTALE PÊCHE

www.peche62.fr

Fishing tourism

What about fishing on the Ternoise river?

4 fishing associations along the Ternoise river have signed a reciprocity agreement so that anglers can enjoy an uninterrupted 23 miles of category 1 fishing grounds on the banks of the river. They are renowned for their density in salmonids - which reproduce naturally - as well as large migratory fish such as Atlantic salmon and sea trout. On the Ternoise riverbanks, you can enjoy different fishing techniques: fly-fishing, lure fishing, Czech nymphing... Come and fish for a day, or two, or more!



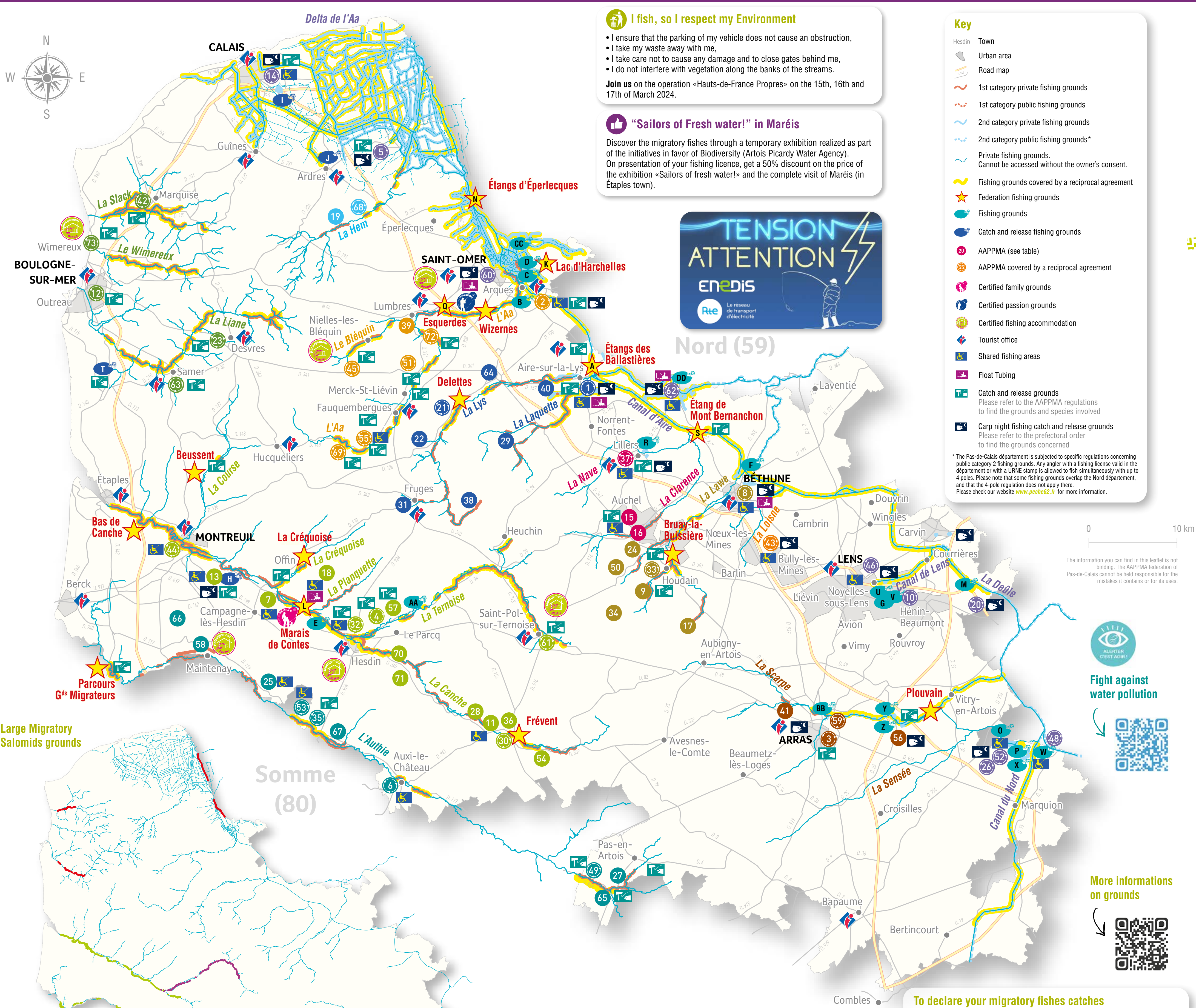
Fishing accommodation

The French fishing federation (FNPF) has established a label and its accompanying quality charter to help promote the development of fishing accommodation and services. The Fédération du Pas-de-Calais pour la Pêche et la Protection du Milieu Aquatique also applies this quality charter locally. Fishing accommodation must meet several criteria: it has to be close to fishing grounds, must be open during the fishing season, must welcome anglers in a personal way and be ready to advise them and provide relevant leaflets and documentation. It must also offer services such as a locker or room for fishing tackle, packed meals, and make fishing easier by delivering fishing licenses, informing anglers about current regulations and what the departmental Federation has to offer. Here is a list of fishing accommodation that have applied for this quality label. And now, thanks to the financial contribution of Europe and the Hauts-de-France Region, you can freely loan the fishing equipment. You can find below the list of certified accommodation. Please, find below the list of certified accommodation.

Town	Name	Type	Address	Phone / Email / Website
Gauchin-Verlingoit	Le Manoir du Loubaré	B&B - Holiday Cottage	550, rue des Montifaux 62130 Gauchin-Verlingoit	+33 3 21 03 05 05 moulin.loubar@wanadoo.fr www.loubarre.com
Gouy-Saint-André	Le Clos de la Prairie	Hôtel de Charme	17, rue de Saint-Rémy 62870 Gouy-Saint-André	+33 3 21 90 39 58 contact@leclotdelaprairie.com www.leclotdelaprairie.com/
Hesdin	Hypnos	Hotel	22, rue d'Arras 62140 Hesdin	+33 3 21 86 80 21 reservation@hotelhypnos.fr
Huby-St-Leu	Manoir de la Canche	Holiday Cottage	30 Rue Fernand Lemercier, 62140 Huby-Saint-Leu	+33 3 21 06 71 00 www.lemanoirdelacanche.com
Maintenay	Marliou • Elisa	2 Holiday Cottages	1 Rue du Cantuaire 62870 Maintenay	+33 6 09 64 86 73 lesamisdelathuie@gmail.com www.lesamisdelathuie.com
Nielles les Bains	Le Fol Pensier	Holiday Cottage	24, rue des Folles Pensées 62380 Blequin	+33 3 98 54 35 54 sylvainpolet@laposte.net
St-Omer	Chitigite • Batistin	2 Holiday Cottages	42 rue de la poissonnerie 62500 Saint-Omer	+33 3 21 98 37 52 chitigite.flandrin@gmail.com
Teneur	La Verte Colline	Campsite	11 Rue d'Heuchin, 62134 Teneur	+33 6 33 35 06 69 campinglavertecolline@yahoo.fr www.campinglavertecolline.com +33 6 08 74 21 93 www.fermimonet.net
Wimereux	Le Major	Holiday Cottage	534, route de Conteville 62142 Belle et Houllfort	-

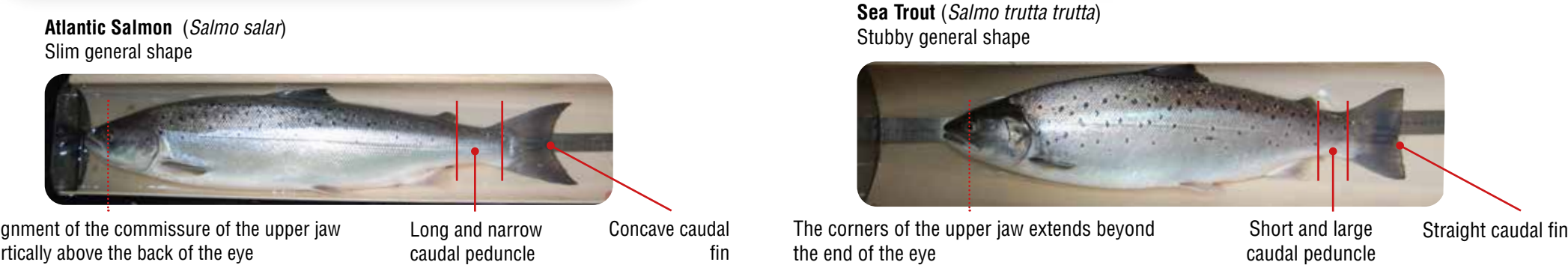
Book your holiday accommodation in Pas-de-Calais departement on: www.resa62.com

Fishing grounds in Pas-de-Calais



Key

- Sea Trout and Atlantic Salmon fishing grounds with debit authorization
- Only catch and release Sea Trout and Atlantic Salmon fishing grounds
- Only catch and release Sea Trout fishing grounds



alignment of the commissure of the upper jaw vertically above the back of the eye Long and narrow caudal peduncle Concave caudal fin The corners of the upper jaw extends beyond the end of the eye Short and large caudal peduncle Straight caudal fin

I fish, so I respect my Environment

- I ensure that the parking of my vehicle does not cause an obstruction,
- I take my waste away with me,
- I take care not to cause any damage and to close gates behind me,
- I do not interfere with vegetation along the banks of the streams.

Join us on the operation «Hauts-de-France Propres» on the 15th, 16th and 17th of March 2024.

“Sailors of Fresh water!” in Marais

Discover the migratory fishes through a temporary exhibition realized as part of the initiatives in favor of Biodiversity (Artois Picardy Water Agency). On presentation of your fishing licence, get a 50% discount on the price of the exhibition «Sailors of fresh water!» and the complete visit of Marais (in Étaples town).



Key

- Hesdin Town
- Urban area
- Road map
- 1st category private fishing grounds
- 1st category public fishing grounds
- 2nd category private fishing grounds
- 2nd category public fishing grounds*
- Private fishing grounds. Cannot be accessed without the owner's consent.
- Fishing grounds covered by a reciprocal agreement
- Federation fishing grounds
- Fishing grounds
- Catch and release fishing grounds
- AAPPMA (see table)
- AAPPMA covered by a reciprocal agreement
- Certified family grounds
- Certified passion grounds
- Certified fishing accommodation
- Tourist office
- Shared fishing areas
- Float Tubing
- Catch and release grounds. Please refer to the AAPPMA regulations to find the grounds and species involved
- Carp night fishing catch and release grounds. Please refer to the prefectural order to find the grounds concerned

* The Pas-de-Calais département is subjected to specific regulations concerning public category 2 fishing grounds. Any angler with a fishing license valid in the département or with a URNE stamp is allowed to fish simultaneously with up to 4 poles. Please note that some fishing grounds overlap the Nord département, and that the 4-pole regulation does not apply there. Please check our website www.peche62.fr for more information.

0 10 km

The information you can find in this leaflet is not binding. The AAPPMA federation of Pas-de-Calais cannot be held responsible for the mistakes it contains or for its uses.



Fight against water pollution

More informations on grounds



To declare your migratory fishes catches

You have the Migratory Stamp and you wish keep a catch (salmon or sea trout), your declaration is compulsory on <https://declarationpeche.fr/>

You caught a sea trout or a salmon that you released or not, please declare (anonymously if you want) your catch on <https://tinyurl.com/declarationpeche62>

Delineation of route and specific regulations

	upstream boundary	Salmons' taking	Sea trout's taking	Twilight derogation (2 hours after sunset for sea trout)
Authie	Downstream from the bridge of the N25 in Doullens	YES TAC 10	YES	YES (until downstream from the bridge of the N25 in Doullens)
Canche	Downstream from the dam of the SEMG SARL in Saint Georges	YES TAC 10	YES	YES (Refer to the limits announced on the 2022 prefectural decree)
Ternoise	Downstream from the downstream dam to hermicourt in Hermicourt	NO	NO	NO
Liane	Downstream from the bridge of the D901 between Carly and Samer	NO	NO	NO
Stack	Downstream from the bridge of the A16 in Marquise	NO	NO	NO
Aa	Downstream from the bridge of the D928 in Saint Omer	NO	NO	NO

Possession of migratory stamp is strictly required if:

- You want to take a Sea Trout or an Atlantic Salmon (only allowed on the Canche and Authie axis to the upstream limits which are indicated in the table below cons).
- You want to fish during the twilight exemption (only allowed on the Canche and Authie axis to the upstream limits indicated in the table below cons).
- You want to fish on these rivers until the closing date of the fishing Atlantic Salmon and Sea Trout.

Beware, the practice of catch and release is mandatory on several courses.

The removal of an Atlantic Salmon (only allowed on the Canche and Authie axis to the upstream limits indicated in the table below cons), must be in compliance with the number of specimens that can be legally caught (prefectoral order). Once the limit number is reached, the removal of an Atlantic Salmon is prohibited with the publication of a new prefectoral order. So please regularly check up our website to know the updated number. When you take an Atlantic Salmon, you must immediately put a mark to the fish and report the capture to the CNICS* (in accordance with the recommendations of the migratory set submitted with your migratory stamp. The Catch report for Sea Trout from the CNICS* is not mandatory but highly recommended. Thank you to check the validity of the number of specimens that can be legally caught presented on the annual order.

*CNICS : Centre National d'Interprétation des Captures de Salmonidés migrateurs (National Center for the Interpretation of migratory salmonids catches)

Maison de la Pêche et de la Nature (fishing and nature centre) in Pas-de-Calais

“How the fishing federation raises awareness and spreads information”

If you need any extra information concerning the Pas-de-Calais FDAAPPMA and its activities, you can come and visit the Maison de la Pêche et de la Nature - located rue des Alpes in Arques - Monday to Friday from 9 a.m. to 12 a.m. and from 2 p.m. to 5 p.m. Premises closed to the public on Friday afternoon.

Fédération du Pas-de-Calais pour la Pêche et la Protection du Milieu Aquatique
Maison de la Pêche et de la Nature
Rue des Alpes • 62510 ARQUES
Tel. +33 3 91 92 02 03
contact@peche62.fr
peche62

www.peche62.fr

This leaflet was partly funded thanks to the Pas-de-Calais département council.

LOCAL AAPPMA

AAPPMA reciprocity-based

N°	Town	AAPPMA	E-mail	Internet
1	Aire-sur-la-Lys	La Fine Gaule	aappma.aire-sur-la-lys@peche62.fr	
2	Arques	L'Union Arquoise	aappma.arques@peche62.fr	
3	Arras	Les Francs Pêcheurs	aappma.arras@peche62.fr	
4	Auchy-les-Hesdin	L'Ancienne	aappma.auchy-les-hesdin@peche62.fr	
5	Audruicq	Les Babilards	aappma.audruicq@peche62.fr	
6	Auxi-le-Château	La Truite Auxiloise	aappma.auxi-le-chateau@peche62.fr	
8	Béthune	Les Percetteux Béthunois	aappma.bethune@peche62.fr	
10	Billy-Montigny	Les Percetteux Billysiens	aappma.billy-montigny@peche62.fr	
12	Boulogne-sur-Mer	APLB	aappma.boulogne-sur-mer@peche62.fr	
14	Calais	Les Pêcheurs du Calais	aappma.calais@peche62.fr	
20	Courcelles-les-Lens	La Carpe Courcelloise	aappma.courcelles-les-lens@peche62.fr	
21	Coyecques	La Coyecquoise	aappma.coyecques@peche62.fr	
23	Desvres	AAPPMA de Desvres et environs	aappma.desvres@peche62.fr	www.peche-desvres.fr
26	Ecourt-Saint-Quentin	Les Pêcheurs Réunis	aappma.ecourt-saint-quentin@peche62.fr	
30	Frévent	AAPPMA de Frévent-Bourst	aappma.frevent@peche62.fr	
32	Hesdin	Les Pêcheurs Hesdinois	aappma.hesdin@peche62.fr	
33	Houdain	La Truite Houdainoise	aappma.houdain@peche62.fr	
35	Labroye Le Bosle	La Truite de Labroye Le Bosle	aappma.labroye-le-bosle@peche62.fr	
37	Lillers	Les Poissons Rouges Lillerois	aappma.lillers@peche62.fr	
42	Marquise	Association des Pêcheurs de Canton de Marquise	aappma.marquise@peche62.fr	http://norbert.kosmowski.free.fr/
43	Mazingarbe	L'Albâtre Brebisienne	aappma.mazingarbe@peche62.fr	
44	Montreuil-sur-Mer	Les Pêcheurs du Montreuillois	aappma.montreuil-sur-mer@peche62.fr	
45	Nelles-les-Béguin	Les Amis de la Rivière	aappma.nelles-les-beugin@peche62.fr	
46	Noyelles-sous-Lens	Les Pêcheurs Noyellois	aappma.noyelles-sous-lens@peche62.fr	
48	Oisy-le-Verger	La Roche Dorée	aappma.oisy-le-verger@peche62.fr	
49	Orville	La Gaule du Bas Canton d'Orville	aappma.orville@peche62.fr	
51	Ouve Wignin	La Saumonerie	aappma.ouve-wignin@peche62.fr	
52	Palluel	L'Amicale des Pêcheurs de Palluel	aappma.palluel@peche62.fr	
53	Raye-sur-Authie	Les Pêcheurs de Raye-sur-Authie	aappma.raye-sur-authie@peche62.fr	
55	Renty-Fauquembergues	AAPPMA de Renty-Fauquembergues	aappma.renty-fauquembergues@peche62.fr	
59	Saint-Laurent-Blangy	L'Entente Halieutique du Val de Scarpe	aappma.saint-laurent-blangy@peche62.fr	
60	Saint-Omer	La Concorde	aappma.saint-omer@peche62.fr	laconcorde62.fr
61	Saint-Pol-sur-Ternoise	La Gaule Populaire	aappma.saint-pol-sur-ternoise@peche62.fr	
62	Saint-Venant	Le Brochet Saint-Venantois	aappma.saint-venant@peche62.fr	
63	Samer	APVL	aappma.samer@peche62.fr	
68	Tournem-sur-la-Hem	Les Pêcheurs de Tournem	aappma.tournem-sur-la-hem@peche62.fr	
69	Verchocq-Rumilly	AAPPMA de Verchocq-Rumilly	aappma.verchocq-rumilly@peche62.fr	
72	Wavrans-sur-Aa	La Saumonerie	aappma.wavrans-sur-aa@peche62.fr	
73	Wimereux	AAPPMA de Wimereux	aappma.wimereux@peche62.fr	

AAPPMA no reciprocity-based

N°	Town	AAPPMA	E-mail	Internet
7	Beauriville	La Gaule Beaurivilloise	aappma.beauriville@peche62.fr	
9	Beugin	La Volante	aappma.beugin@peche62.fr	
11	Boubers-sur-Canche	AAPPMA de Boubers-sur-Canche	aappma.boubers-sur-canche@peche62.fr	
13	Brimeux	Le Saumon de Brimeux	aappma.brimeux@peche62.fr	
15	Calonne-Ricourt	La Truite Minière	aappma.calonne-ricourt@peche62.fr	
16	Camblian-Château	La Camblinoise	aappma.camblian-chateau@peche62.fr	
17	Caucourt	La Truite du Gué	aappma.caucourt@peche62.fr	
18	Cavron-Saint-Martin	La Planquette	aappma.cavron-saint-martin@peche62.fr	
19	Clerques	Les Pêcheurs de Clerques	aappma.clerques@peche62.fr	
22	Demetroucq	La Prévoyante	aappma.demetroucq@peche62.fr	
24	Divion	La Truite Divionnaise	aappma.divion@peche62.fr	
25	Douriez	L'Entente de l'Authie	aappma.douriez@peche62.fr	
27	Famechon	AAPPMA de Famechon	aappma.famechon@peche62.fr	
28	Fillières	Les Pêcheurs à la ligne de Fillières	aappma.fillieres@peche62.fr	
29	Flechin	L'Entente Fléchinoise	aappma.flechin@peche62.fr	
31	Fruges	La Gaule Populaire Frugoise	aappma.fruges@peche62.fr	
34	La Comté	L'arc-en-ciel	aappma.la-comte@peche62.fr	
36	Ligny-sur-Canche	Les Amis de la Gaule	aappma.ligny-sur-canche@peche62.fr	
38	Lisbourg	La Truite Lys-Bourgeoise	aappma.lysbourg@peche62.fr	
39	Lumbres	La Truite Lumbroise	aappma.lumbres@peche62.fr	
40	Manetzi	La Truite Mamezienne	aappma.manetzi@peche62.fr	
41	Maroeuil	Les Francs Pêcheurs Maroeuillois	aappma.maroeuil@peche62.fr	
50	Ourlon	AAPPMA d'Ourlon	aappma.ourlon@peche62.fr	
54	Rebreuvette	Les Amis de la Canche	aappma.rebreuvette@peche62.fr	
56	Roux	Les Percetteux de la Scarpe	aappma.roux@peche62.fr	
57	Rollancourt	Les Amis de la Truite	aappma.rollancourt@peche62.fr	
58	Roussant	AAPPMA de Roussant	aappma.roussant@peche62.fr	
64	Thérainne	La Gaule Thérainnoise	aappma.therainne@peche62.fr	
65	Thièvres	Les Francs Pêcheurs de Thièvres	aappma.thievers@peche62.fr	
66	Tigny-Noyelle	Société de Pêche de Tigny-Noyelle	aappma.tigny-noyelle@peche62.fr	
67	Tollent	Les Pêcheurs Réunis de Tollent	aappma.tollent@peche62.fr	
70	Vail-Hesdin	AAPPMA de Vail-Hesdin	aappma.vail-hesdin@peche62.fr	
71	Wail	Société de Pêche de Wail	aappma.wail@peche62.fr	